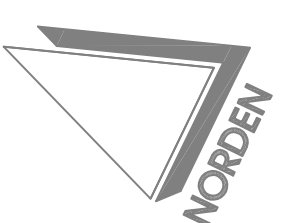


Bestuhlungsplan 4



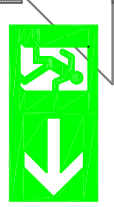
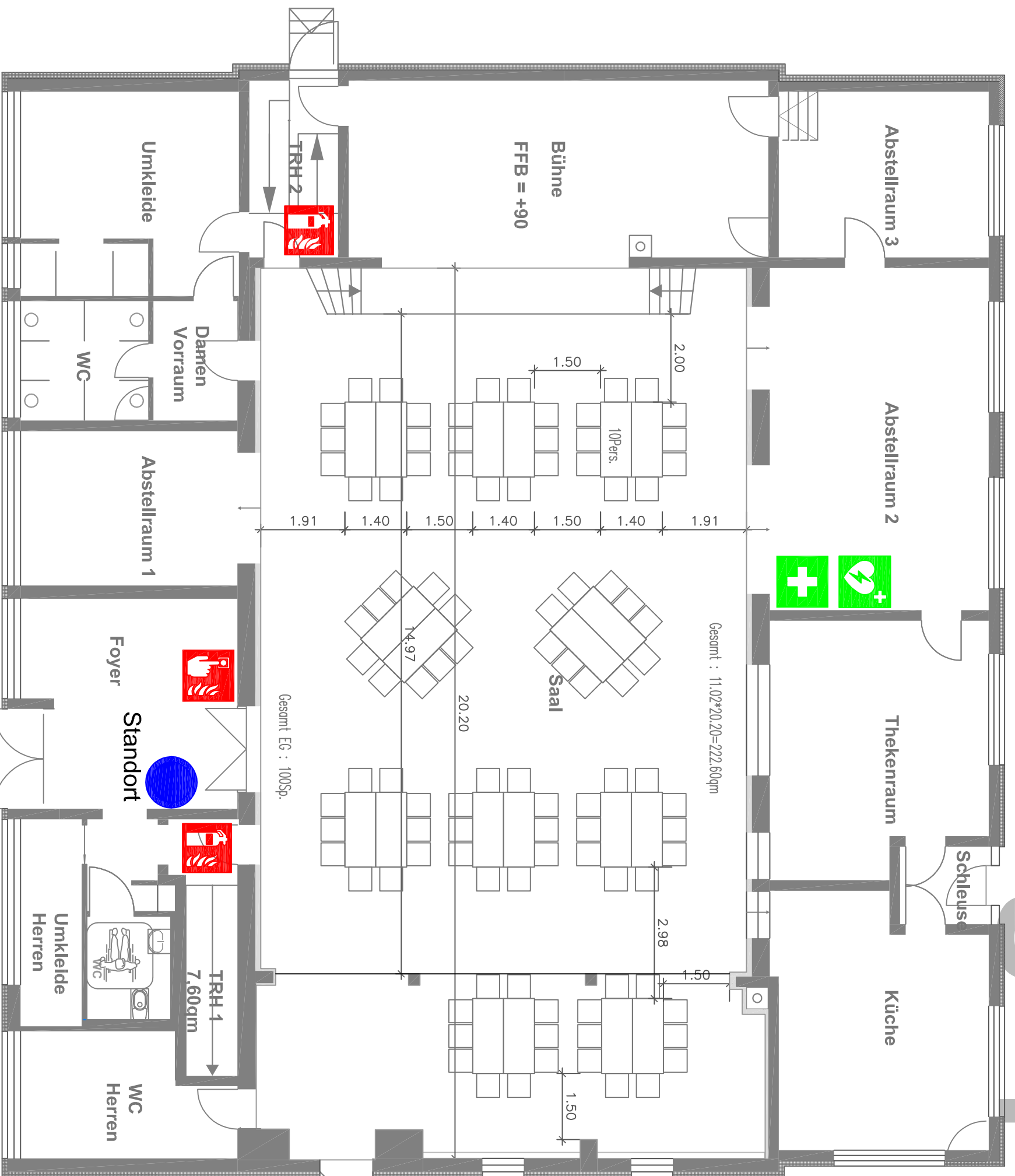
Bestuhlungsplan 4
Turn- und Festhalle
in 75050 Gemmingen –
Stebbach, Jahnweg 2

Gemarkung Stebbach
Flurstück 5393








100 Sitzplätze

Empore nicht bestuhlt.

Datum : 20.01.2014



LEGENDE

- 
Standort
- 
Feuerlöscher
- 
**Brandmelder,
manuell**
- 
**Rettungsweg /
Notausgang**
- 
Erste Hilfe
- 
**Richtungs-
angabe**
- 
Defibrillator